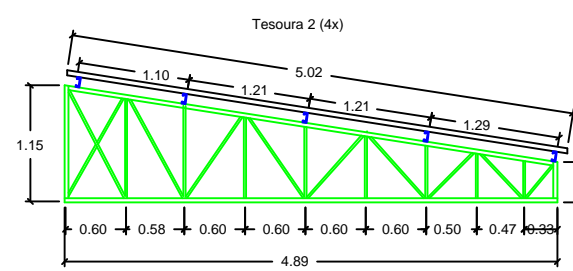
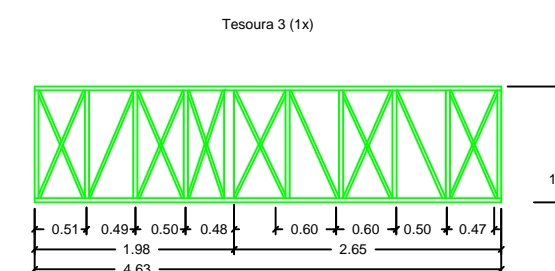


BS - Banzo superior - U 100x40 #13 (2,25mm)
 BI - Banzo inferior - U 100x40 #13 (2,25mm)
 BL - Banzo lateral - U 95x40 #13 (2,25mm)
 D - Diagonais - LL 25x25 #13 (2,25mm)
 M - Montantes - LL 25x25 #13 (2,25mm)



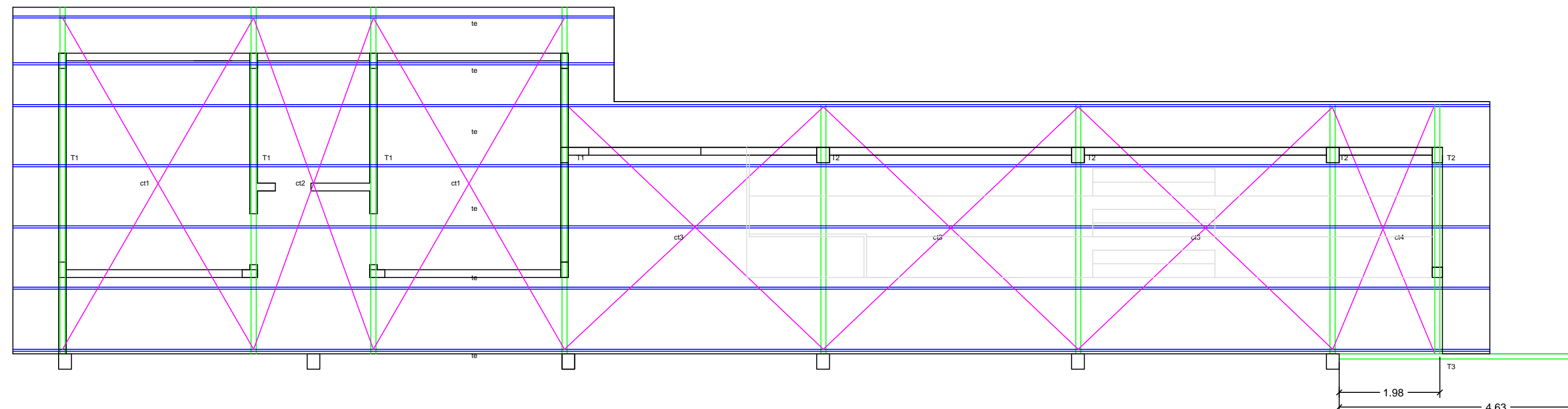
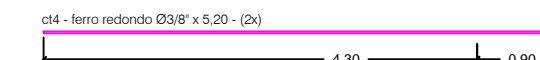
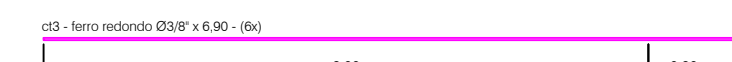
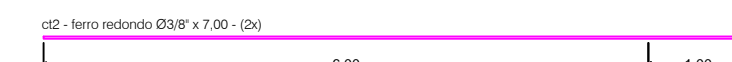
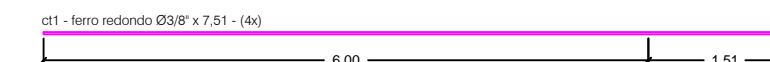
BS - Banzo superior - U 100x40 #13 (2,25mm)
 BI - Banzo inferior - U 100x40 #13 (2,25mm)
 BL - Banzo lateral - U 95x40 #13 (2,25mm)
 D - Diagonais - LL 25x25 #13 (2,25mm)
 M - Montantes - LL 25x25 #13 (2,25mm)

Tergas - 100x10x20 #13



BS - Banzo superior - U 100x40 #13 (2,25mm)
 BI - Banzo inferior - U 100x40 #13 (2,25mm)
 BL - Banzo lateral - U 95x40 #13 (2,25mm)
 M - Montantes - U 95x25 #13 (2,25mm)
 M - Montantes de Apoio - U 95x25 #13 (2,25mm)
 D - Diagonais - LL 25x25 #13 (2,25mm)

Contraventos



PROJETO ESTRUTURA METÁLICA
 Esc. 1:75

PRANCHA: PROJETO ESTRUTURA METÁLICA	REVISÃO: 05/07/2021	FOLHA: 01/01
LOCAL: Escola Marinha do Brasil Rua Joaquim Pinto Neto, S/Nº, Glória de Dourados - MS		
ASSUNTO: ESTRUTURA DA COBERTURA	DATA: 03/07/2021	ESCALA: INDICADA
RESP. TÉCNICO: Paulo Carlos Silva Junior Engenheiro Civil - CREA: 27.894-D/PR - VISTO- 8981-MS. CPF: 836.397.489-72	ÁREA DE INTERVENÇÃO: A = 728,46 m² PROPRIETÁRIO: Município de Glória de Dourados CNPJ: 03.155.942/0001-37	